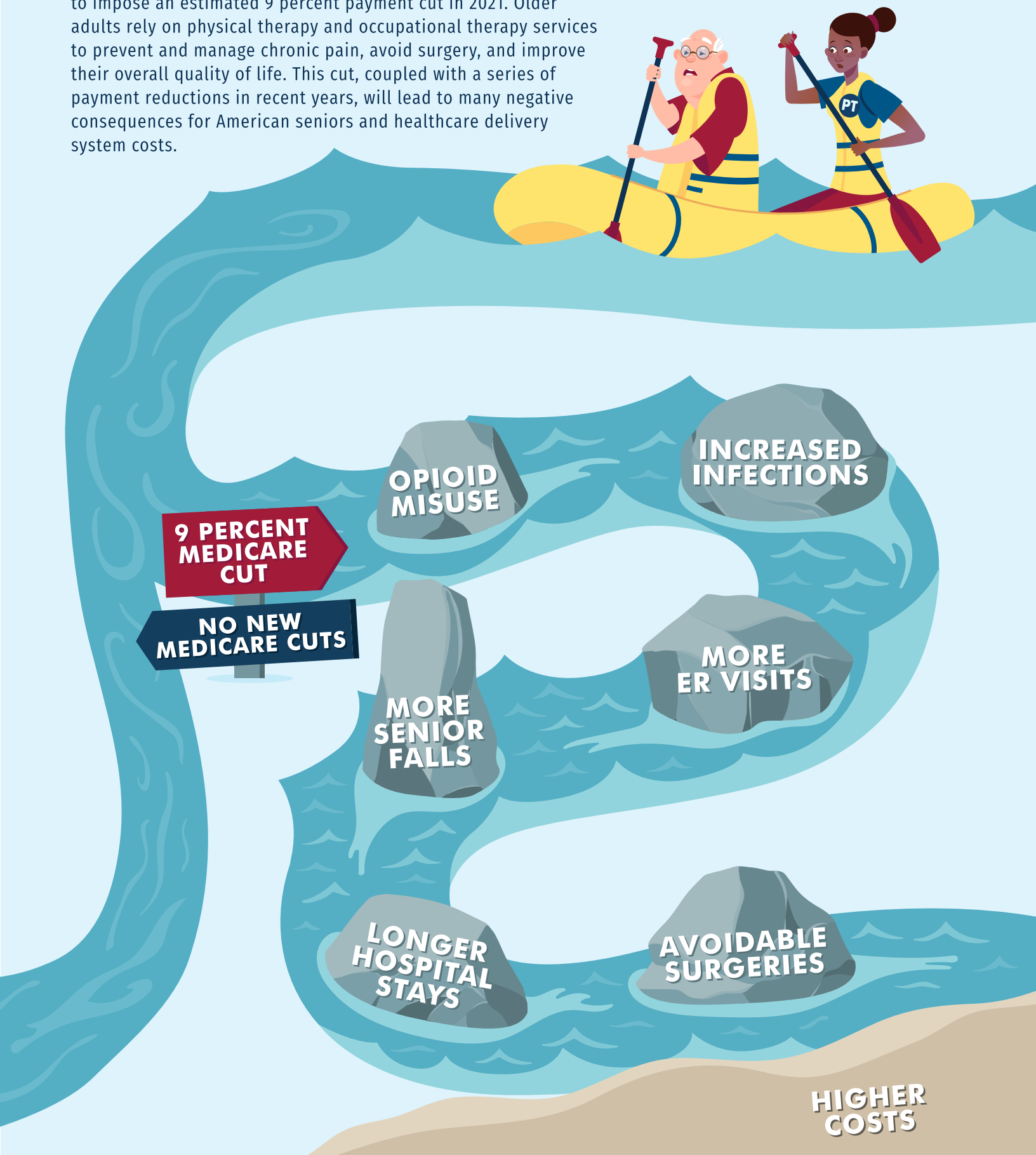


# THE DOWNSTREAM EFFECTS OF MEDICARE PHYSICAL THERAPY CUTS

In the 2021 Proposed Medicare Physician Fee Schedule Final Rule, the Centers for Medicare & Medicaid Services indicated it intends to impose an estimated 9 percent payment cut in 2021. Older adults rely on physical therapy and occupational therapy services to prevent and manage chronic pain, avoid surgery, and improve their overall quality of life. This cut, coupled with a series of payment reductions in recent years, will lead to many negative consequences for American seniors and healthcare delivery system costs.



**DANGER AHEAD!**  
**MORE MEDICARE CUTS IN 2021**

**#FightTheCut**

**APTQI**   
ALLIANCE FOR PHYSICAL THERAPY  
QUALITY AND INNOVATION

 **APTA**  
American Physical Therapy Association