

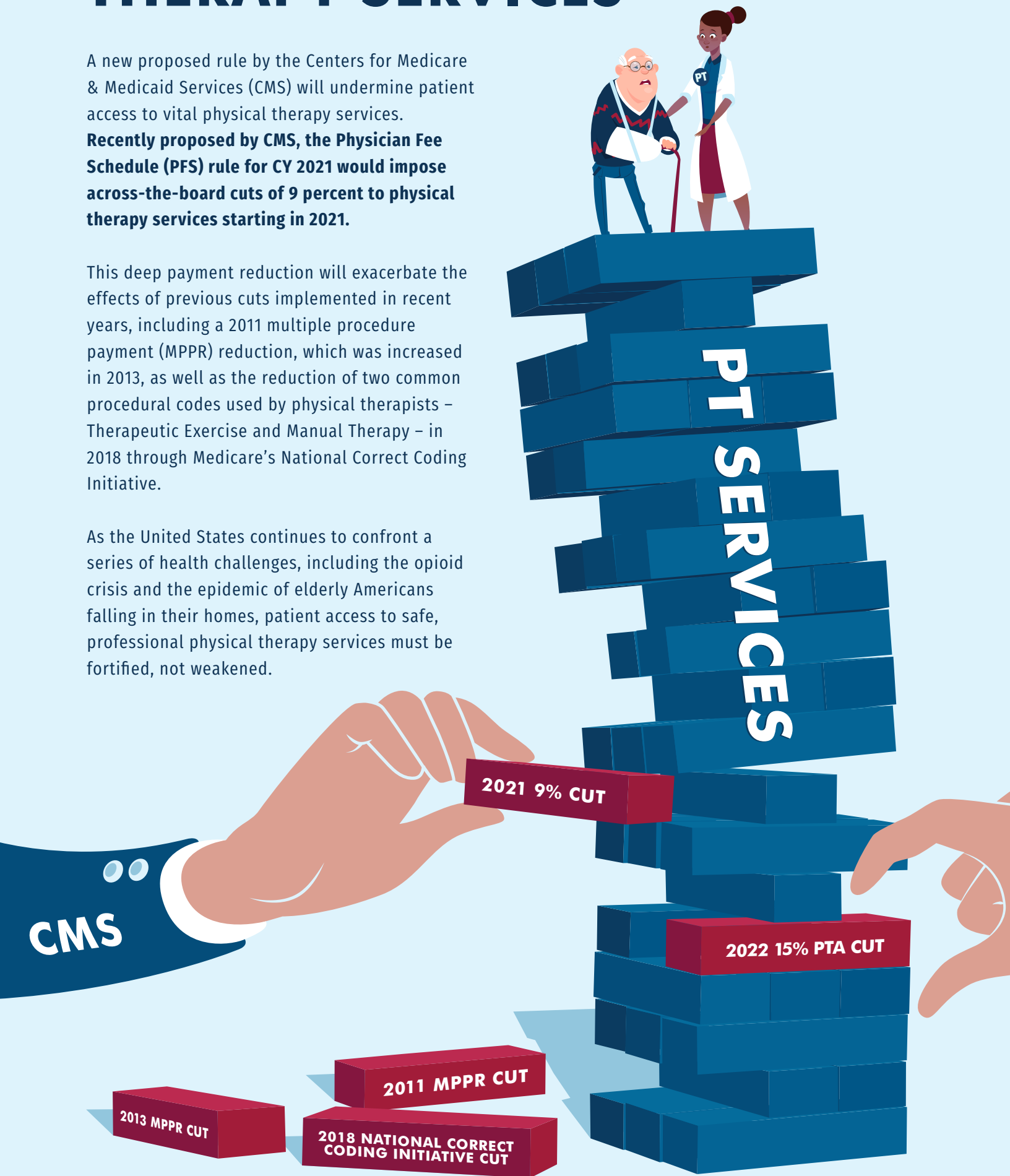
DEEP MEDICARE CUTS WILL DESTABILIZE PHYSICAL THERAPY SERVICES

A new proposed rule by the Centers for Medicare & Medicaid Services (CMS) will undermine patient access to vital physical therapy services.

Recently proposed by CMS, the Physician Fee Schedule (PFS) rule for CY 2021 would impose across-the-board cuts of 9 percent to physical therapy services starting in 2021.

This deep payment reduction will exacerbate the effects of previous cuts implemented in recent years, including a 2011 multiple procedure payment (MPPR) reduction, which was increased in 2013, as well as the reduction of two common procedural codes used by physical therapists – Therapeutic Exercise and Manual Therapy – in 2018 through Medicare’s National Correct Coding Initiative.

As the United States continues to confront a series of health challenges, including the opioid crisis and the epidemic of elderly Americans falling in their homes, patient access to safe, professional physical therapy services must be fortified, not weakened.



STAND UP FOR SENIORS:
Stop the 9% PT Cut Before 2021



WWW.APTQI.COM