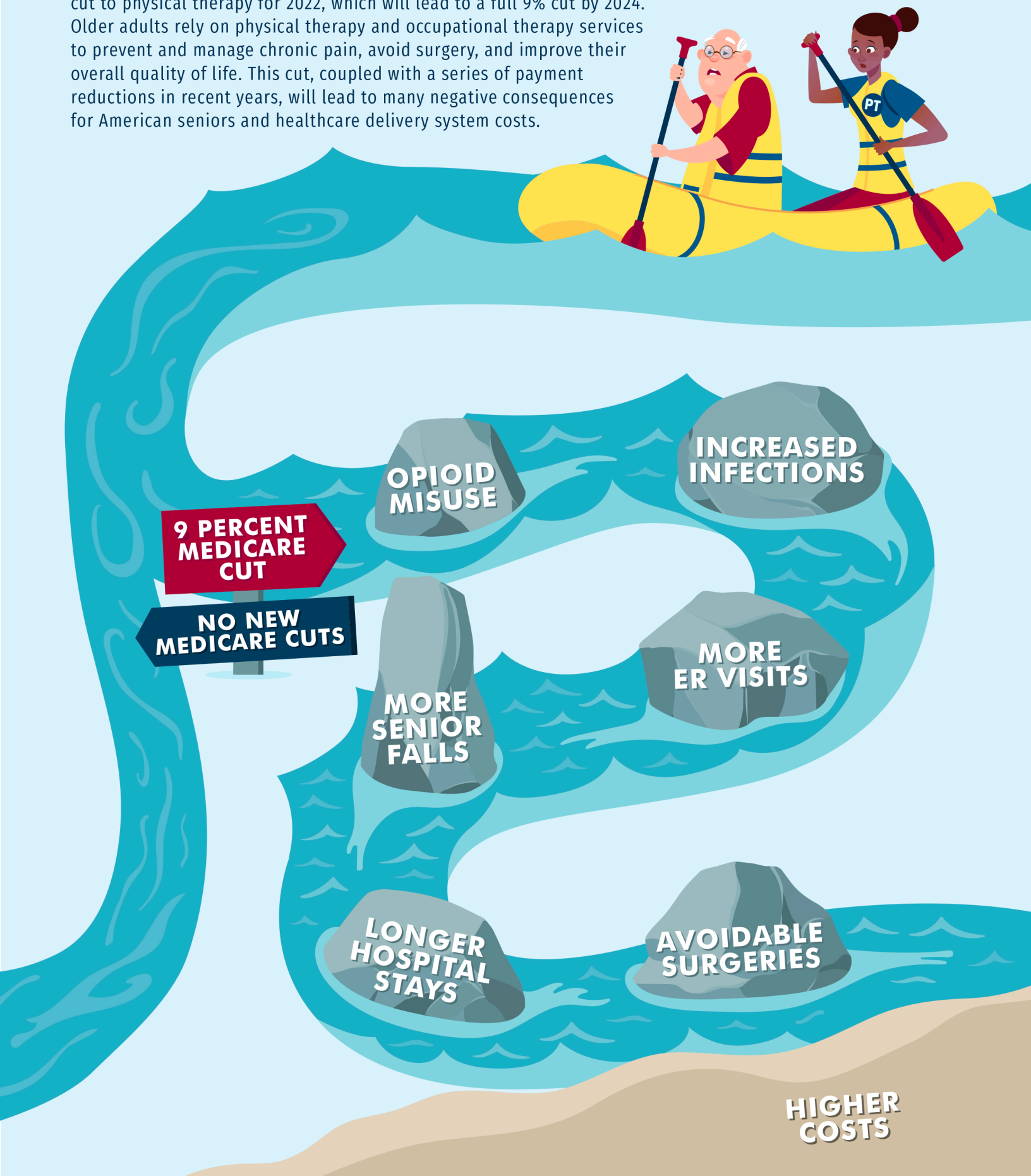


THE DOWNSTREAM EFFECTS OF MEDICARE PHYSICAL THERAPY CUTS

In the 2022 Medicare Physician Fee Schedule Final Rule, the Centers for Medicare & Medicaid Services implemented an additional 3.75% payment cut to physical therapy for 2022, which will lead to a full 9% cut by 2024. Older adults rely on physical therapy and occupational therapy services to prevent and manage chronic pain, avoid surgery, and improve their overall quality of life. This cut, coupled with a series of payment reductions in recent years, will lead to many negative consequences for American seniors and healthcare delivery system costs.



DANGER AHEAD!
MORE MEDICARE CUTS IN 2022

APTQI 
ALLIANCE FOR PHYSICAL THERAPY
QUALITY AND INNOVATION

[APTQI.COM](https://www.ap tqi.com)