

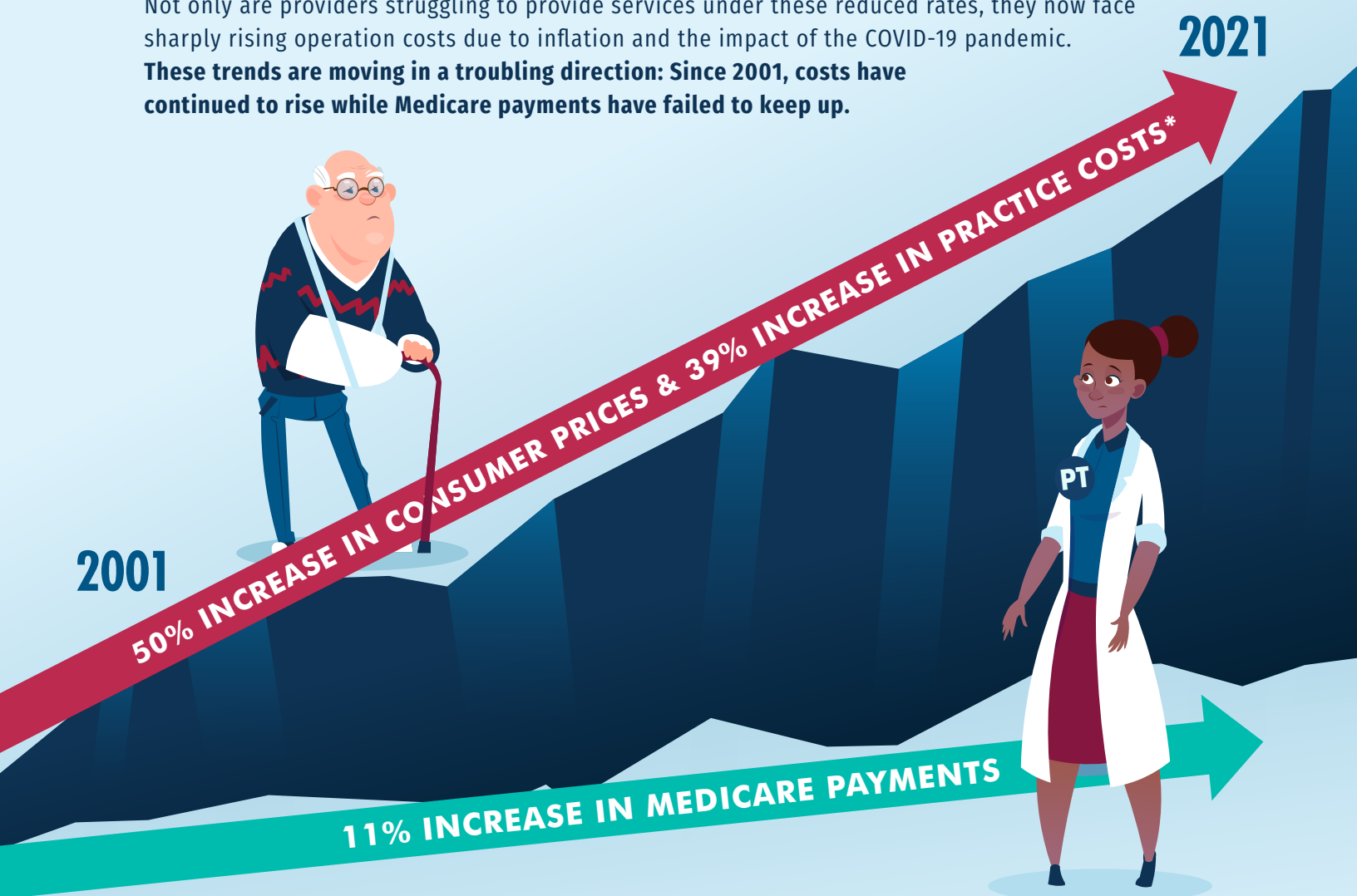
# THE GAP IS WIDENING: AS COSTS RISE, MEDICARE PAYMENTS FAIL TO KEEP UP

The Medicare Access and CHIP Reauthorization Act of 2015 (MACRA) established a 0% update for Medicare Physician Fee Schedule (MPFS) service rates through 2025, but this freeze has not prevented the Centers for Medicare & Medicaid Services (CMS) from continuing to implement a series of payment reductions for healthcare providers – including physical, occupational, and speech therapists.

In the MPFS Proposed Rule for CY2023, CMS included yet another cut to specialty providers: a 4.5% cut, which will add up to an approximately 9 percent cut between 2020 and 2024. These cuts, while temporarily averted through action from Congress, are still scheduled for implementation and come on the heels of a series of steep payment cuts over the past decade.

Not only are providers struggling to provide services under these reduced rates, they now face sharply rising operation costs due to inflation and the impact of the COVID-19 pandemic.

**These trends are moving in a troubling direction: Since 2001, costs have continued to rise while Medicare payments have failed to keep up.**



**These trends are unsustainable. If this gap continues to widen, many physical, occupational, and speech therapy providers will NOT be able to provide vital services to American seniors.**

As the United States continues to confront a series of healthcare crises, including the ongoing COVID-19 pandemic and an insufficient workforce, patient access to safe, professional physical, occupational and speech therapy services must be stabilized and protected. To do so, Congress must act quickly to adjust providers' payments to reflect the current economics.

**CONGRESS: PROTECT  
SENIORS' ACCESS TO CARE BY  
ENSURING STABLE AND FAIR  
PAYMENT FOR PROVIDERS!**

**APTQI**   
ALLIANCE FOR PHYSICAL THERAPY  
QUALITY AND INNOVATION